

BA-S022

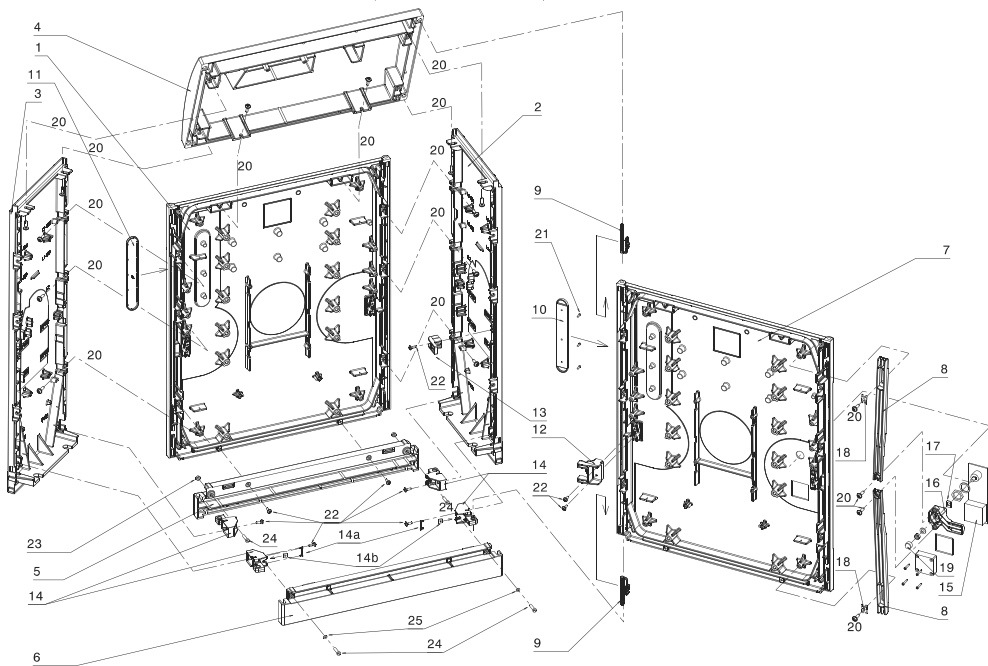
- ⓐ 操作手册
- ⓐ *Operating manual*

1482007

- ⓐ 电缆分线箱 **LABEO – 尺寸 00-1**
- ⓐ ***Cable distribution cabinet LABEO – Size 00-1***



日期/*Dated:* 07/16  
更新日期/*Latest update:* 07/16



箱体物料表  
Bill of Material List

BA-S022

		KVSL00-38		KVSL00-31		KVSL0-38		KVSL0-31		KVSL1-38		KVSL1-31	
Pg.	Pos.	Order No.	Qty.	Order No.	Qty.	Order No.	Qty.	Order No.	Qty.	Order No.	Qty.	Order No.	Qty.
包装	位置	订货号	数量	订货号	数量	订货号	数量	订货号	数量	订货号	数量	订货号	数量
模压件	1	SB34003	1	SB34010	1	SB34004	1	SB34011	1	SB34005	1	SB34012	1
	2	SB33992	1	SB33993	1	SB33992	1	SB33993	1	SB33992	1	SB33993	1
	3	SB33992	1	SB33993	1	SB33992	1	SB33993	1	SB33992	1	SB33993	1
	4	SB33995	1	SB33995	1	SB33992	1	SB33996	1	SB33997	1	SB33997	1
	5	SB33999	1	SB33999	1	SB34000	1	SB34000	1	SB34001	1	SB34001	1
	6	SB33999	1	SB33999	1	SB34000	1	SB34000	1	SB34001	1	SB34001	1
	7	SB3400350	1	SB3401050	1	SB3400450	1	SB3401150	1	SB3400550	1	SB3401250	1
A	9	SB8901594	2	SB8901594	2	SB8901594	2	SB8901594	2	SB8901594	2	SB8901594	2
	11	SB8901596	2	SB8901596	2	SB8901596	2	SB8901596	2	SB8901596	2	SB8901596	2
	12	SB8901593	1	SB8901593	2	SB8901593	1	SB8901593	2	SB8901593	1	SB8901593	2
	15	SB8900346	1	SB8900346	1	SB8900346	1	SB8900346	1	SB8900346	1	SB8900346	1
	16	SB8901592	1	SB8901592	1	SB8901592	1	SB8901592	1	SB8901592	1	SB8901592	1
	17	SB8900197	1	SB8900197	1	SB8900197	1	SB8900197	1	SB8900197	1	SB8900197	1
	18	SB8900009	2	SB8900009	2	SB8900009	2	SB8900009	2	SB8900009	2	SB8900009	2
B	13	SB8901601	1	SB8901601	1	SB8901601	1	SB8901601	1	SB8901601	1	SB8901601	1
	14	SB8901600	1	SB8901600	2	SB8901600	1	SB8901600	2	SB8901600	1	SB8901600	2
	14a	SB8901591	4	SB8901591	4	SB8901591	4	SB8901591	4	SB8901591	4	SB8901591	4
	14b	SB8900008	2	SB8900008	2	SB8900008	2	SB8900008	2	SB8900008	2	SB8900008	2
C	23	SB8900012	2	SB8900012	2	SB8900012	2	SB8900012	2	SB8900012	2	SB8900012	2
	24	YB66109	2	YB66109	2	YB66109	2	YB66109	2	YB66109	2	YB66109	2
	25	YB65183	4	YB65183	4	YB65183	4	YB65183	4	YB65183	4	YB65183	4
D	20	SB8900011	2	SB8900011	2	SB8900011	2	SB8900011	2	SB8900011	2	SB8900011	2
	22	YB68315	16	YB68315	18	YB68315	16	YB68315	18	YB68315	17	YB68315	19
	8	YB68317	9	YB68317	12	YB68317	9	YB68317	12	YB68317	10	YB68317	13
	8	SB8901598	2	SB8901599	2	SB8901598	2	SB8901599	2	SB8901598	2	SB8901599	2
	10*	SB8901595	1	SB8901595	1	SB8901595	1	SB8901595	1	SB8901595	1	SB8901595	1
	21*	Y3000094	3	Y3000094	3	Y3000094	3	Y3000094	3	Y3000094	3	Y3000094	3
	26*	YB68320	/	YB68320	/	YB68320	/	YB68320	/	YB68320	/	YB68320	/
	27*	YB68316	/	YB68316	/	YB68316	/	YB68316	/	YB68316	/	YB68316	/

非标准配置，如有需要，请来电详询  
\* Is not included in standard package, please call us if you need it.

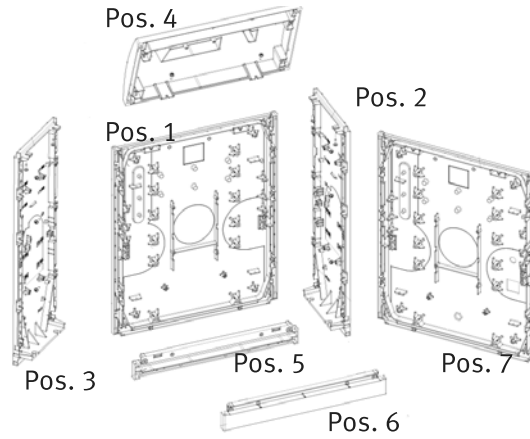
BA-S022

箱体物料表  
Bill of Material List

		KVSL00-58		KVSL00-51		KVSL0-58		KVSL0-51		KVSL1-58		KVSL1-51	
Pg.	Pos.	Order No.	Qty.	Order No.	Qty.	Order No.	Qty.	Order No.	Qty.	Order No.	Qty.	Order No.	Qty.
包装	位置	订货号	数量	订货号	数量	订货号	数量	订货号	数量	订货号	数量	订货号	数量
模 压 件	1	SB34003	1	SB34010	1	SB34004	1	SB34011	1	SB34005	1	SB34012	1
	2	SB34099	1	SB34100	1	SB34099	1	SB34100	1	SB34099	1	SB34100	1
	3	SB34099	1	SB34100	1	SB34099	1	SB34100	1	SB34099	1	SB34100	1
	4	SB34095	1	SB34095	1	SB34096	1	SB34096	1	SB34097	1	SB34097	1
	5	SB33999	1	SB33999	1	SB34000	1	SB34000	1	SB34001	1	SB34001	1
	6	SB33999	1	SB33999	1	SB34000	1	SB34000	1	SB34001	1	SB34001	1
	7	SB3400350	1	SB3401050	1	SB3400450	1	SB3401150	1	SB3400550	1	SB3401250	1
A	9	SB8901594	2	SB8901594	2	SB8901594	2	SB8901594	2	SB8901594	2	SB8901594	2
	11	SB8901596	2	SB8901596	2	SB8901596	2	SB8901596	2	SB8901596	2	SB8901596	2
	12	SB8901593	1	SB8901593	2	SB8901593	1	SB8901593	2	SB8901593	1	SB8901593	2
	15	SB8900346	1	SB8900346	1	SB8900346	1	SB8900346	1	SB8900346	1	SB8900346	1
	16	SB8901592	1	SB8901592	1	SB8901592	1	SB8901592	1	SB8901592	1	SB8901592	1
	17	SB8900197	1	SB8900197	1	SB8900197	1	SB8900197	1	SB8900197	1	SB8900197	1
	18	SB8900009	2	SB8900009	2	SB8900009	2	SB8900009	2	SB8900009	2	SB8900009	2
B	13	SB8901601	1	SB8901601	1	SB8901601	1	SB8901601	1	SB8901601	1	SB8901601	1
	14	SB8901600	1	SB8901600	2	SB8901600	1	SB8901600	2	SB8901600	1	SB8901600	2
	14a	SB8901591	4	SB8901591	4	SB8901591	4	SB8901591	4	SB8901591	4	SB8901591	4
	14b	SB8900008	2	SB8900008	2	SB8900008	2	SB8900008	2	SB8900008	2	SB8900008	2
C	23	SB8900012	2	SB8900012	2	SB8900012	2	SB8900012	2	SB8900012	2	SB8900012	2
	24	YB66109	2	YB66109	2	YB66109	2	YB66109	2	YB66109	2	YB66109	2
	25	YB65183	4	YB65183	4	YB65183	4	YB65183	4	YB65183	4	YB65183	4
D	20	SB8900011	2	SB8900011	2	SB8900011	2	SB8900011	2	SB8900011	2	SB8900011	2
	22	YB68315	18	YB68315	20	YB68315	18	YB68315	20	YB68315	19	YB68315	21
	8	YB68317	9	YB68317	12	YB68317	9	YB68317	12	YB68317	10	YB68317	13
	8	SB8901598	2	SB8901599	2	SB8901598	2	SB8901599	2	SB8901598	2	SB8901599	2
	10*	SB8901595	1	SB8901595	1	SB8901595	1	SB8901595	1	SB8901595	1	SB8901595	1
	21*	Y3000094	3	Y3000094	3	Y3000094	3	Y3000094	3	Y3000094	3	Y3000094	3
	26*	YB68320	/	YB68320	/	YB68320	/	YB68320	/	YB68320	/	YB68320	/
	27*	YB68316	/	YB68316	/	YB68316	/	YB68316	/	YB68316	/	YB68316	/

非标准配置，如有需要，请来电详询  
\* Is not included in standard package, please call us if you need it.

模压件  
Moulded parts



散件装  
SKD



Pos. 8



Pos. 10\*



Pos. 21\*  
M3,5x12  
F-Z A 270  
1,5Nm



Pos. 26\*  
7,0Nm



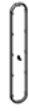
Pos. 27\*  
7,0Nm

## 附件包

## Accessory bag



Pos. 9



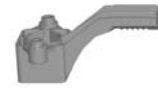
Pos. 11



Pos. 12



Pos. 15



Pos. 16

## A



Pos. 17



Pos. 18



Pos. 19

## B



Pos. 13



Pos. 14



Pos. 14a



Pos. 14b

## C

Pos. 23  
M6,0Pos. 24  
M6x25  
Schlitz  
3,0NmPos. 25  
M6,0

## D

Pos. 20  
M6,0x22  
IP30  
3,0NmPos. 22  
M5,0x16  
IP25  
2,0Nm

## 螺丝拧紧要求:

- 1) 先中间后两边;
- 2) 对角交叉;
- 3) 分三步拧到位。

## How to tighten the screws:

- 1) From middle to both sides;
- 2) Diagonal cross;
- 3) Twist three times until tighten.

以下装配图以KVS1/L/3-08为例  
Sample Cabinet KVS1/L/3-08

BA-S022

**1.**



1 x Pos. 13



4 x Pos. 14



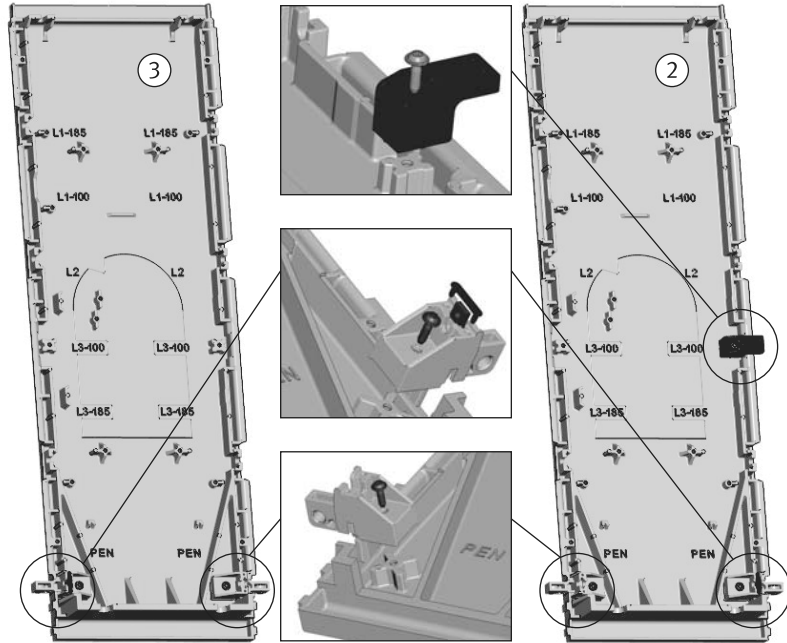
2 x Pos. 14a



2 x Pos. 14b



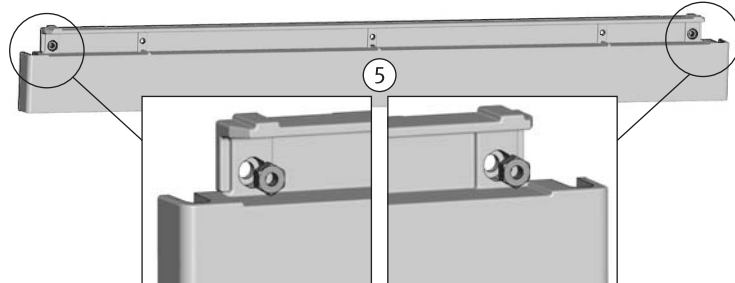
5 x Pos. 22



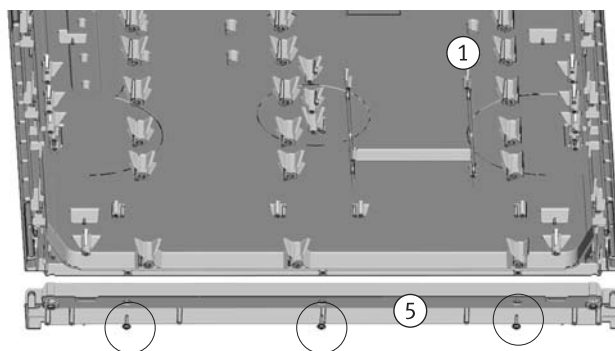
**2.**



2 x Pos. 23



3 x Pos. 22



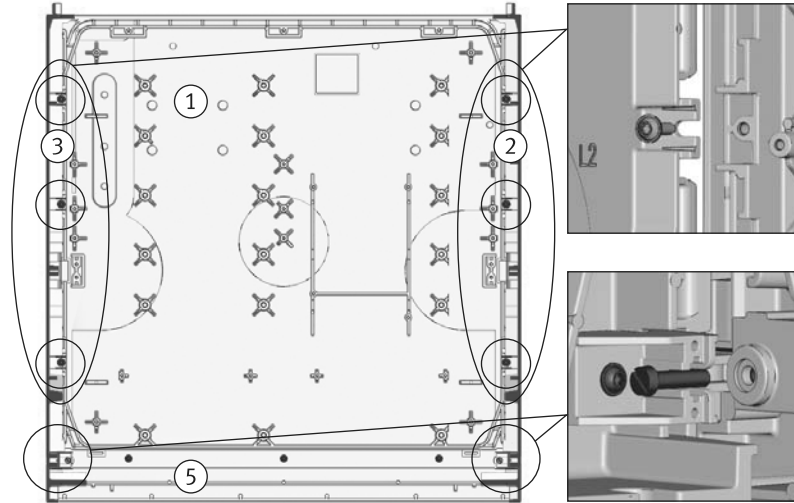
BA-S022

以下装配图以KVS1/L/3-08为例  
Sample Cabinet KVS1/L/3-08

**3.**

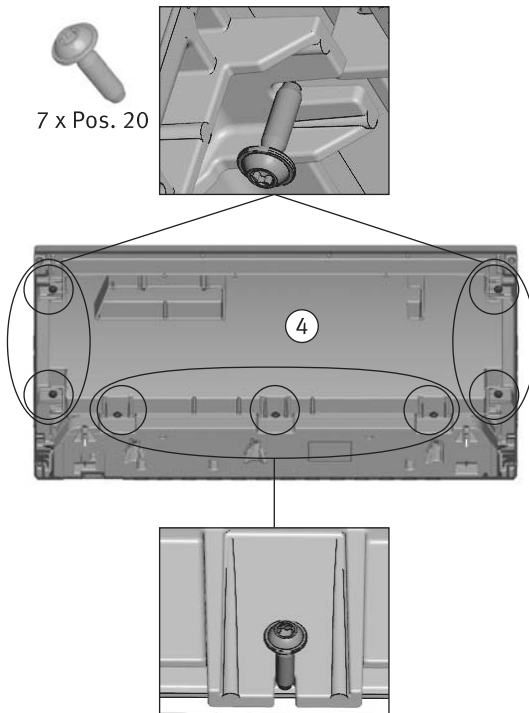
6 x Pos. 20

2 x Pos. 24



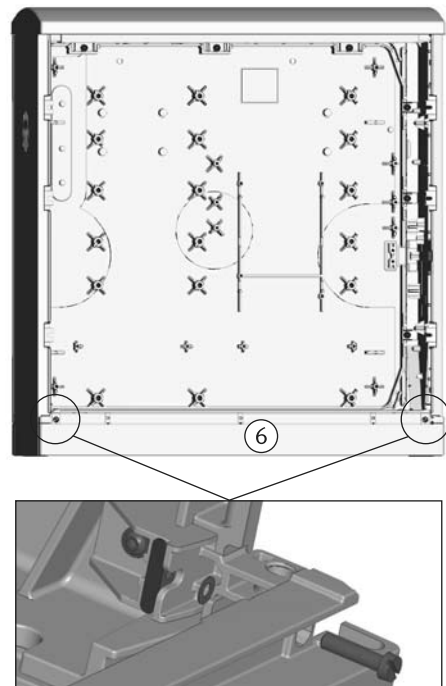
**4.**

7 x Pos. 20



**5.**

2 x Pos. 24 2 x Pos. 25





以下装配图以KVS1/L/3-08为例  
Sample Cabinet KVS1/L/3-08

BA-S022

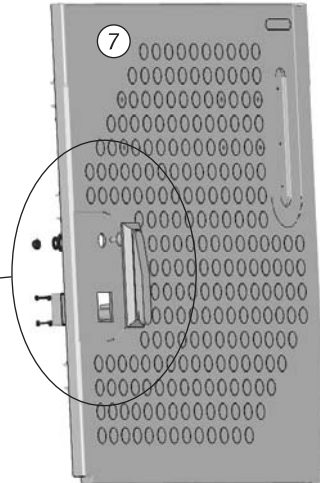
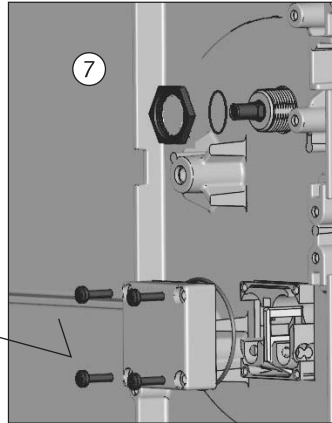
**6.**



1 x Pos. 15



PH2  
1,5Nm



1 x Pos. 16



1 x Pos. 17



2 x Pos. 18



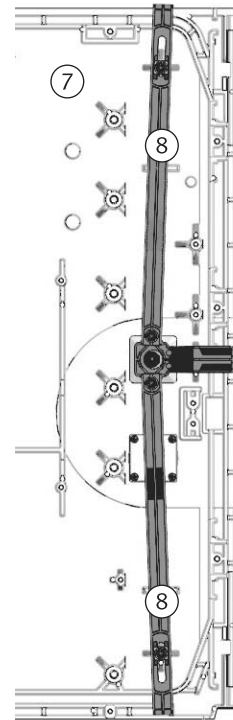
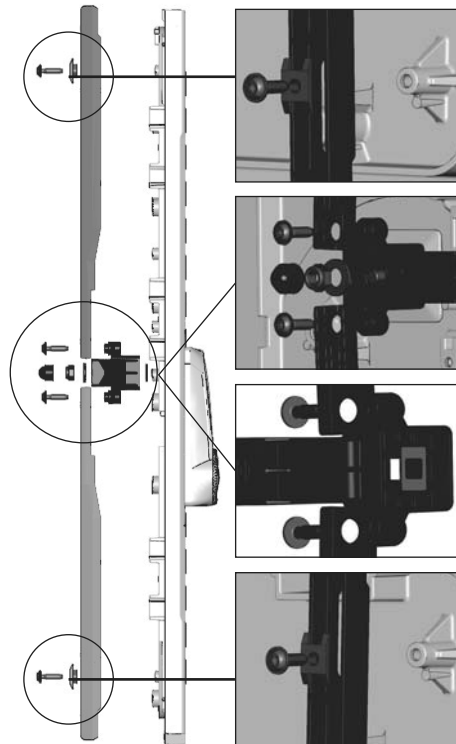
1 x Pos. 19



4 x Pos. 20



Cr-V 13  
4,3Nm



自锁螺母，锁紧后，以锁舌能灵活活动为佳。  
Self-lock nut, lock handle should be flexible after fasten.

保留技术变更的权利  
Reserve the Rights of Technical Change

BA-S022

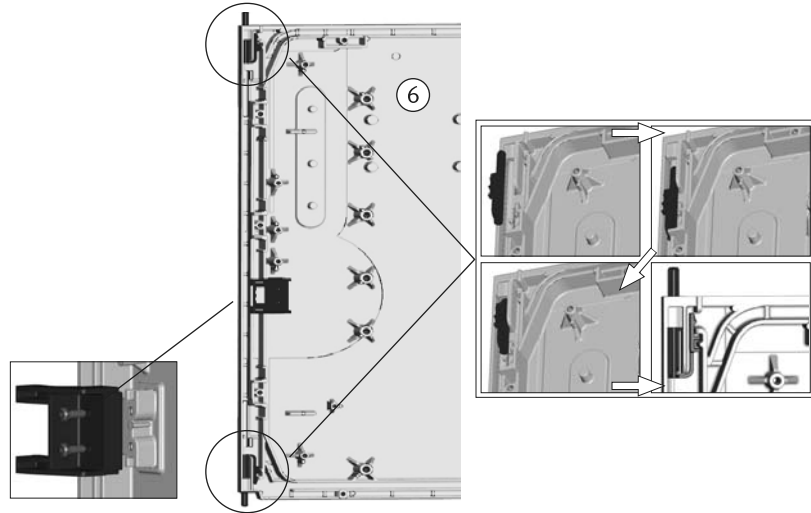
以下装配图以KVS1/L/3-08为例  
Sample Cabinet KVS1/L/3-08

**7.**

2 x Pos. 9

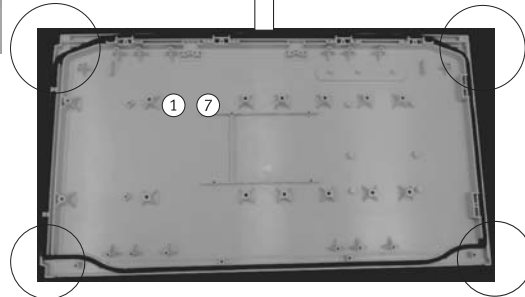
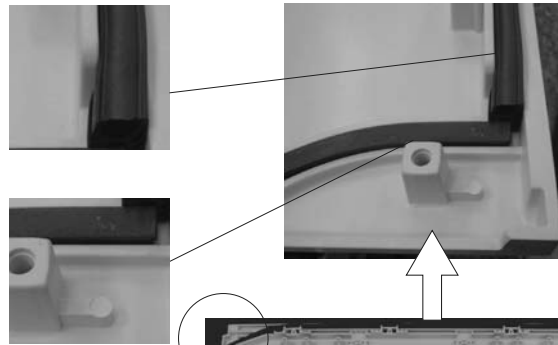
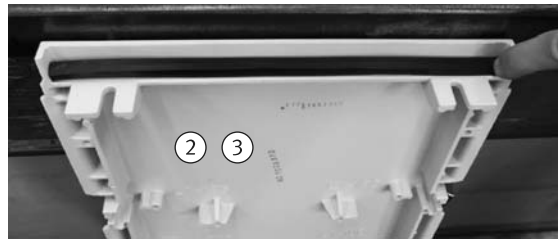
1 x Pos. 12

2 x Pos. 22

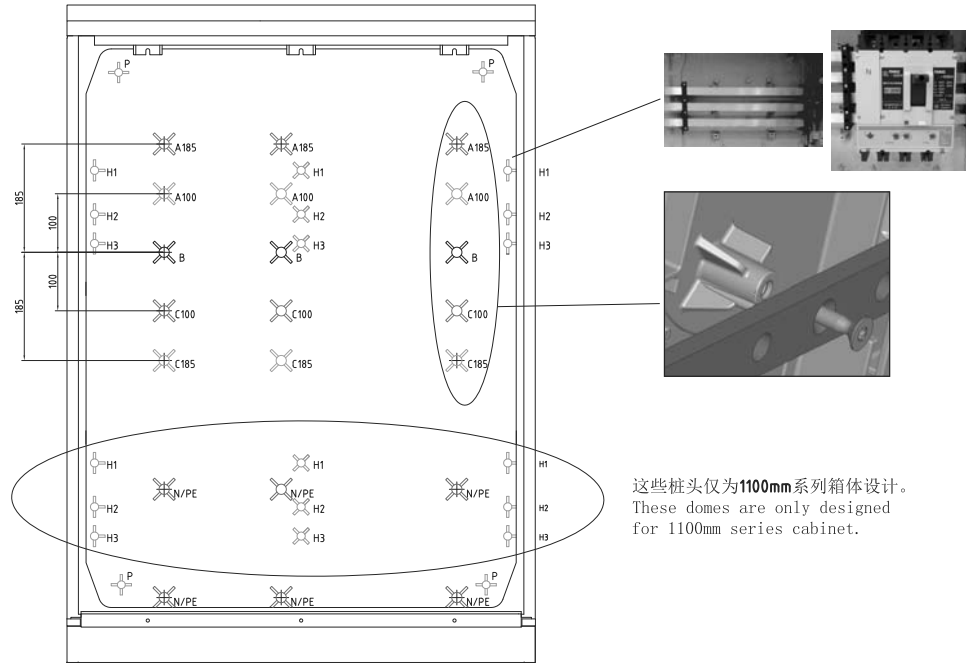


**8.**

IP54



## 9.



说明:

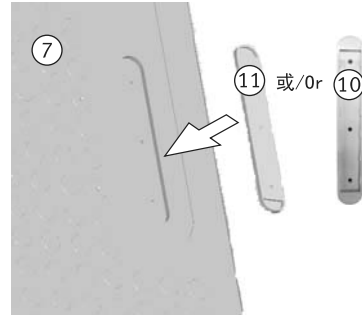
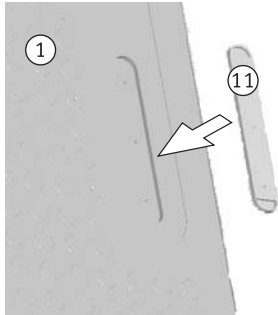
Explain:

序号 No.		铜排 Phase	桩头编号 No. of dome	铜排固定方法 Fixed way of busbar
1	60mm/3P	ABC	H1-H2	母线支架 (Busbar support): SST-60/3
2	60mm/4P	ABCN	H1-H2-H3	母线支架 (Busbar support): SST-60/4
3	100mm	A100-B-C100-N/PE		螺丝 (Screws): YB68320 或 (or) YB68316;
4	185mm	A185-B-C185-N/PE		铜排厚度 (The thickness of copper bar) : 5~10mm

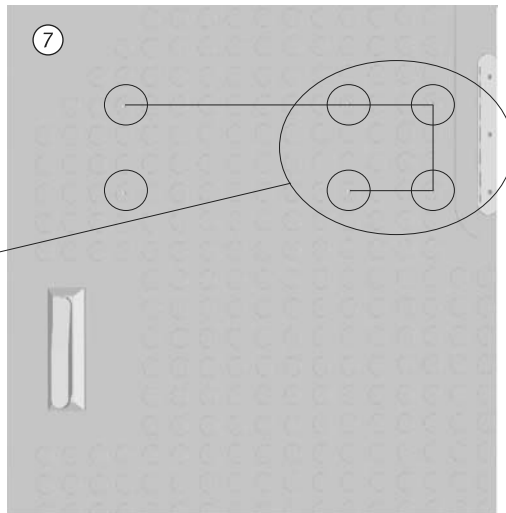
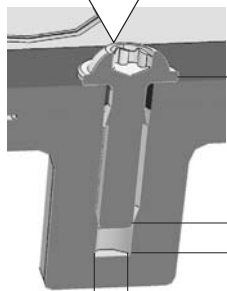
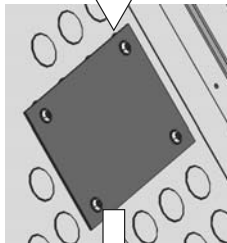
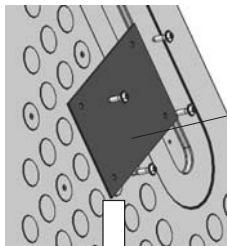
注 PS:

- 如您要安装断路器, 可采用60mm母线系统, 也可采用安装板, 但要注意安装空间的大小及承重。  
If you need to install CBs, you can use the 60mm busbar system or you can also use mounting plate, but please pay attention to the installation space and heavy weight.
- 母线支架, 螺丝, 铜排等, 不是标准配置。  
The Busbar support, Screws, Copper bar etc. aren't in the standard package.
- 具体方案请参考附录: 铜排固定示例。  
For details, please check attachment: Busbar Assembling Examples

10.



4 x Pos. 22



说明:

- 1) 铭牌固定孔由客户开孔
- 2) 不能使用通孔方式, 否则影响 IP 等级
- 3) 若使用其他种类螺丝, 请选用合适预制孔尺寸的螺丝

Remark:

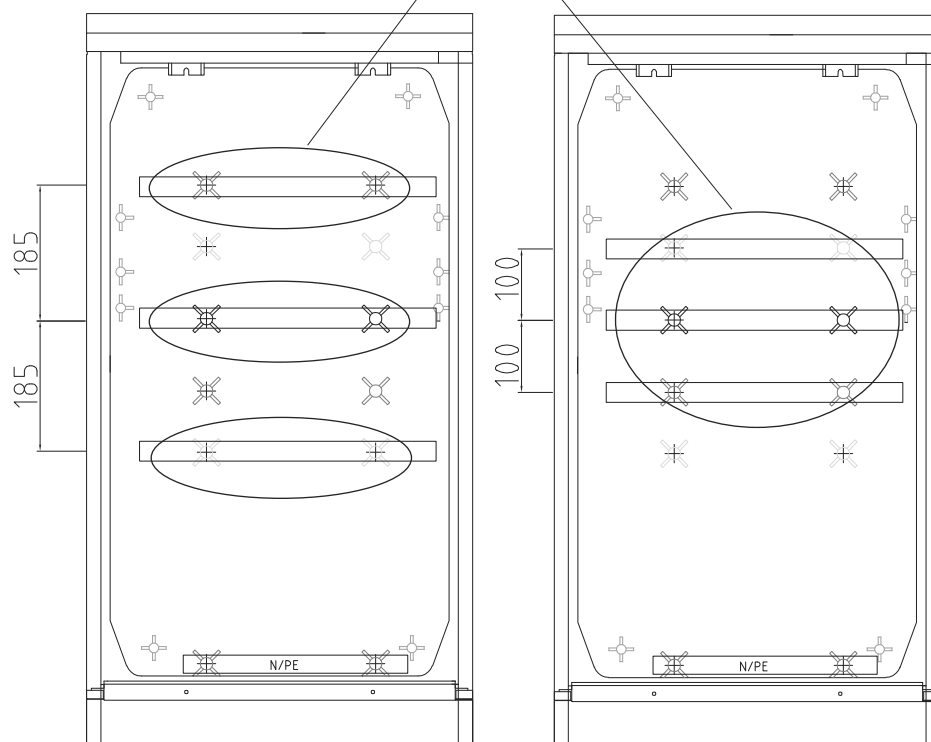
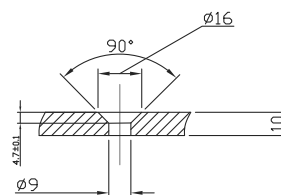
- 1) Name plate holes are drilled by customers.
- 2) Don't drilled as a through hole which will affect IP level.
- 3) Please choose correct size of screw according to the post.

金米勒电气(上海)有限公司  
 Jean Mueller Electric (Shanghai) Co., Ltd.  
 Tel: +86 512 3690 6667  
 Fax: +86 512 3690 6665  
 Http://www.jeanmueller.cn  
 E-mail: info@jeanmueller.cn

## 附录 1：铜排固定示例 Appendix: Busbar Assembling Examples

1) 尺寸 00/0 号 850 高 Size00/0 H=850mm

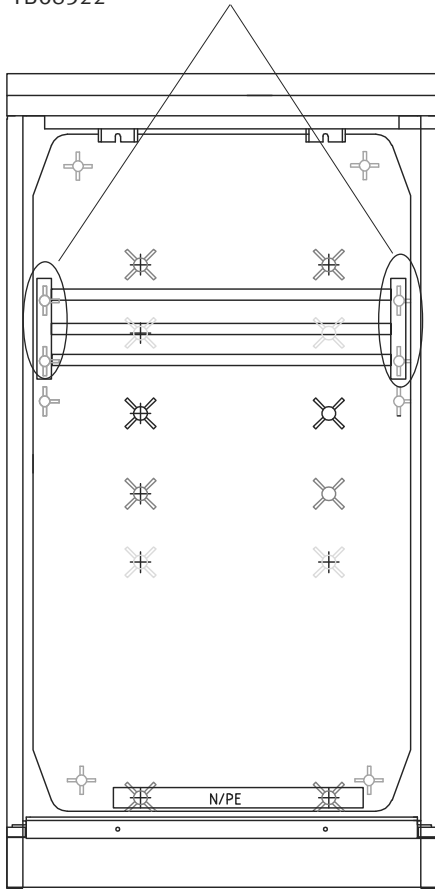
这 6 个桩头用于固定 3 相铜排，且铜排开孔为沉头孔，使用专用螺钉 YB68320  
These 6 domes are used for fixing busbars, and the busbar holes should be counterbore, using special screw YB68320



(a) 185mm 母线系统

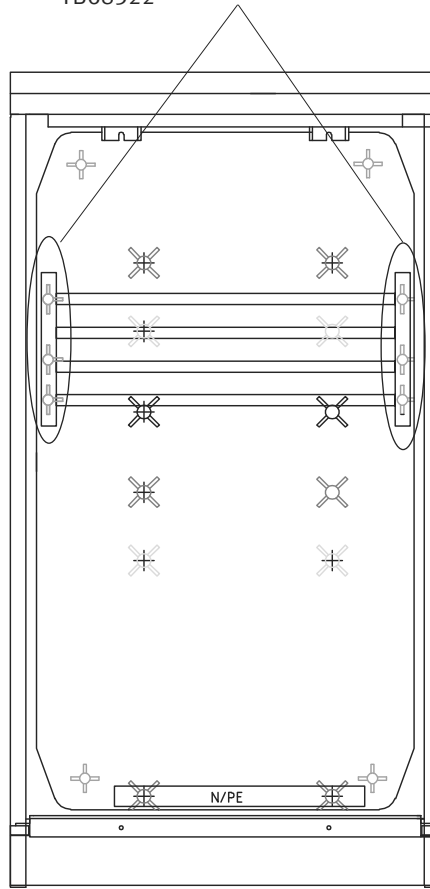
(b) 100mm 母线系统

这 4 个桩头用于固定 2 个 3 极 60mm 母线支架，使用专用螺钉 YB68322  
These 4 domes are used for fixing 60mm 3P busbar support, using speical screw YB68322



(c) 60mm/3P 母线系统

这 6 个桩头用于固定 2 个 4 极 60mm 母线支架，使用专用螺钉 YB68322  
These 6 domes are used for fixing 60mm 4P busbar support, using speical screw YB68322



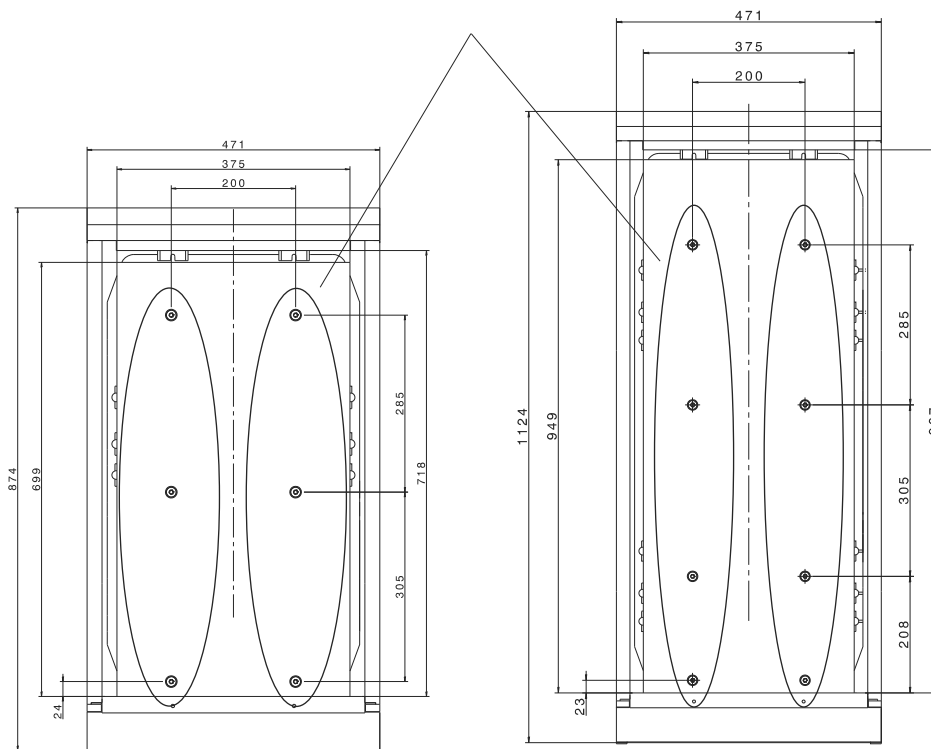
(d) 60mm/4P 母线系统



若需安装重物，请先和金米勒技术部联系。

**If you need to install heavy goods, please contact with us at first.**

这些桩头用于固定安装板，使用专用螺钉 YB68316  
These domes are used for fixing mounting plate, using special screw YB68316



(e1) 850mm 安装板 Mounting plate

(e2) 1100mm 安装板 Mounting plate

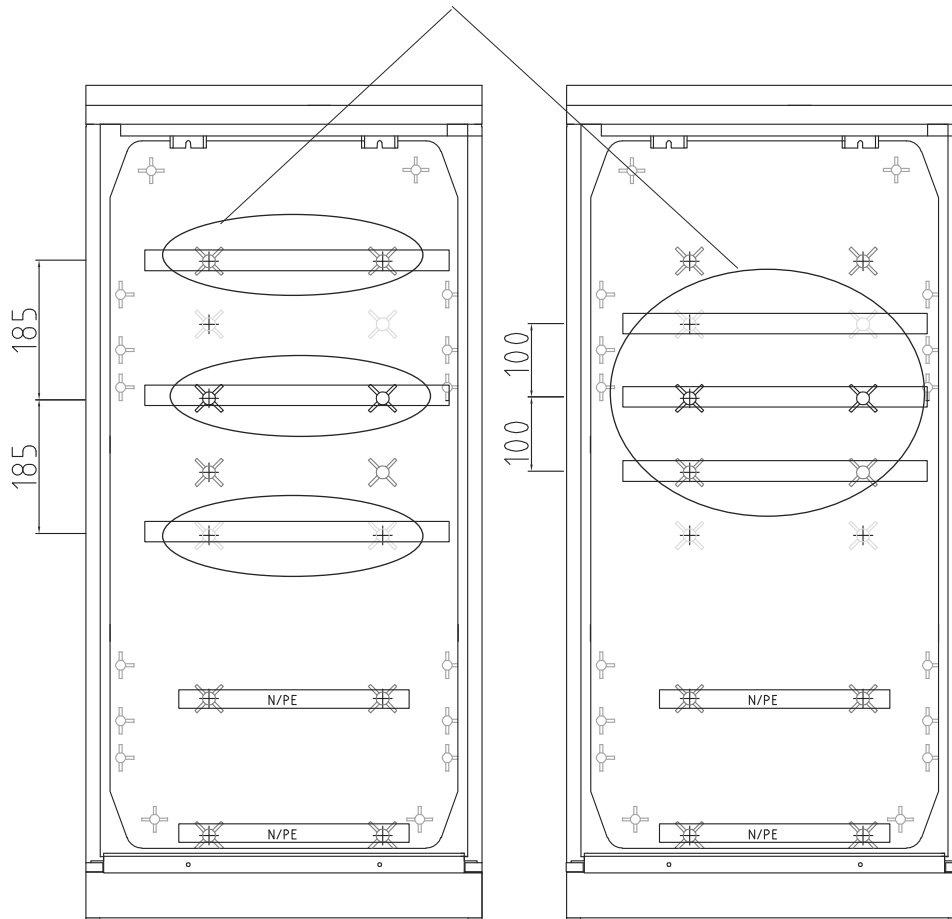
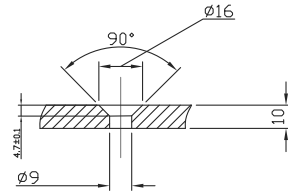


若需安装重物，请先和金米勒技术部联系。  
**If you need to install heavy goods, please contact with us at first.**

2) 尺寸 00/0 号 1100 高 Size00/0 H=1100mm

这 6 个桩头用于固定 3 相铜排，且铜排开孔为沉头孔，使用专用螺钉 YB68320

These 6 domes are used for fixing busbars, and the busbar holes should be counterbore, using speical screw YB68320



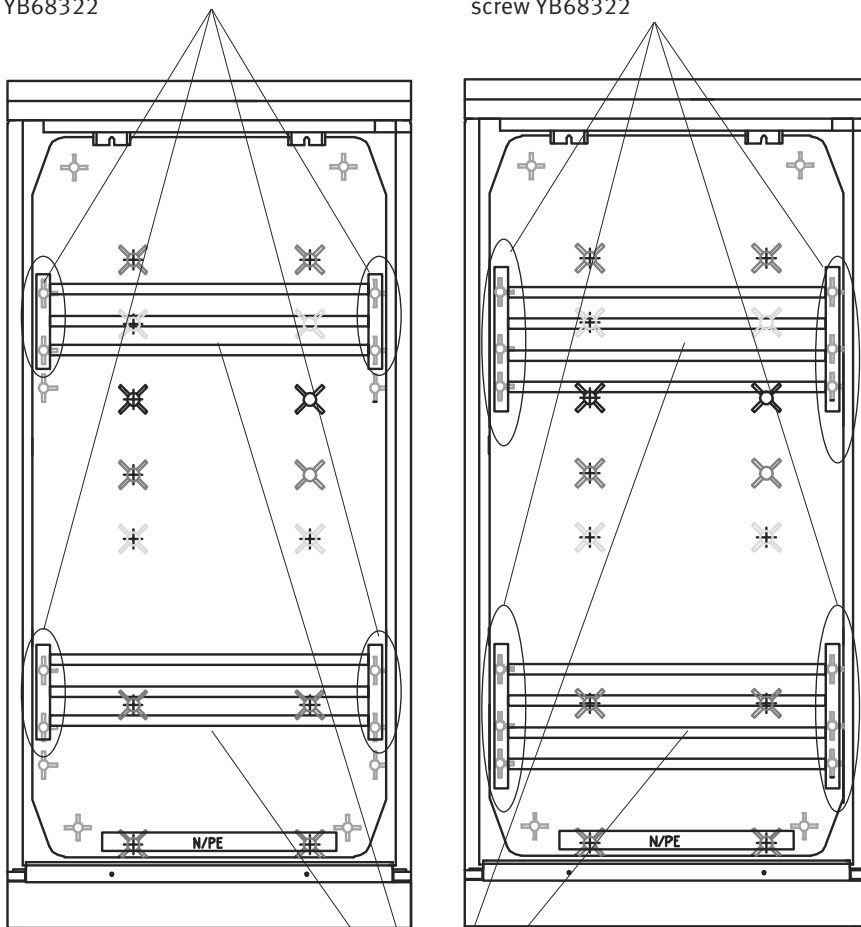
(a) 185mm 母线系统

(b) 100mm 母线系统



这 8 个桩头用于固定 4 个 3 极 60mm 母线支架，使用专用螺钉 YB68322  
These 8 domes are used for fixing 60mm 3P busbar support, using speical screw YB68322

这 12 个桩头用于固定 4 个 4 极 60mm 母线支架，使用专用螺钉 YB68322  
These 12 domes are used for fixing 60mm 4P busbar support, using speical screw YB68322



(c) 60mm/3P 母线系统

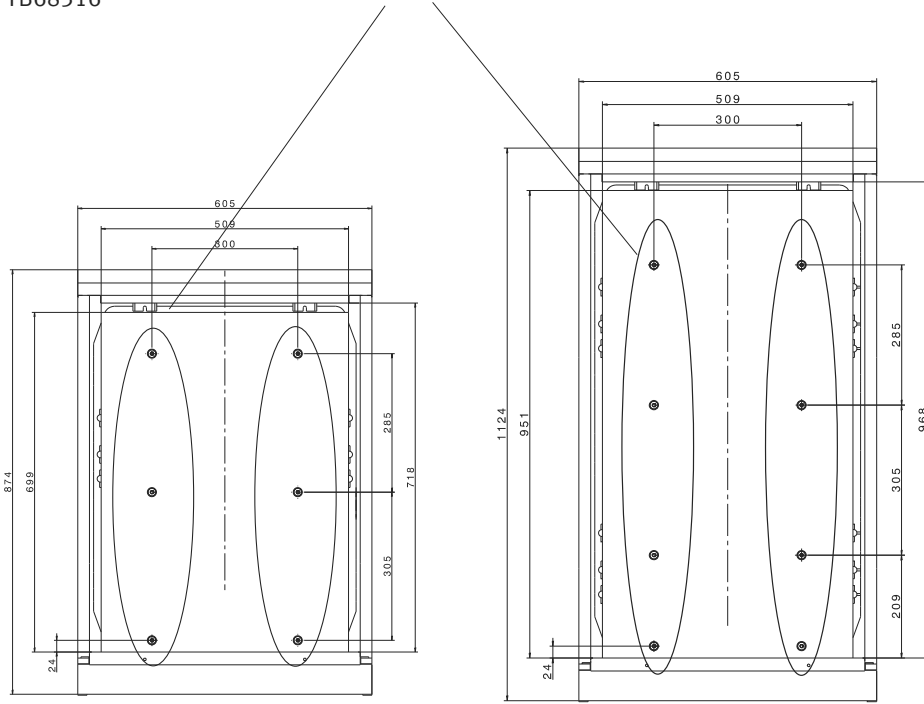
(d) 60mm/4P 母线系统

此高度箱体可安装两套 60mm 母线系统  
The cabinet include 2 sets 60mm busbar system



若需安装重物，请先和金米勒技术部联系。  
**If you need to install heavy goods, please contact with us at first.**

这些桩头用于固定安装板，使用专用螺钉 YB68316  
These domes are used for fixing mounting plate, using special screw YB68316



(e1) 850mm 安装板 Mounting plate

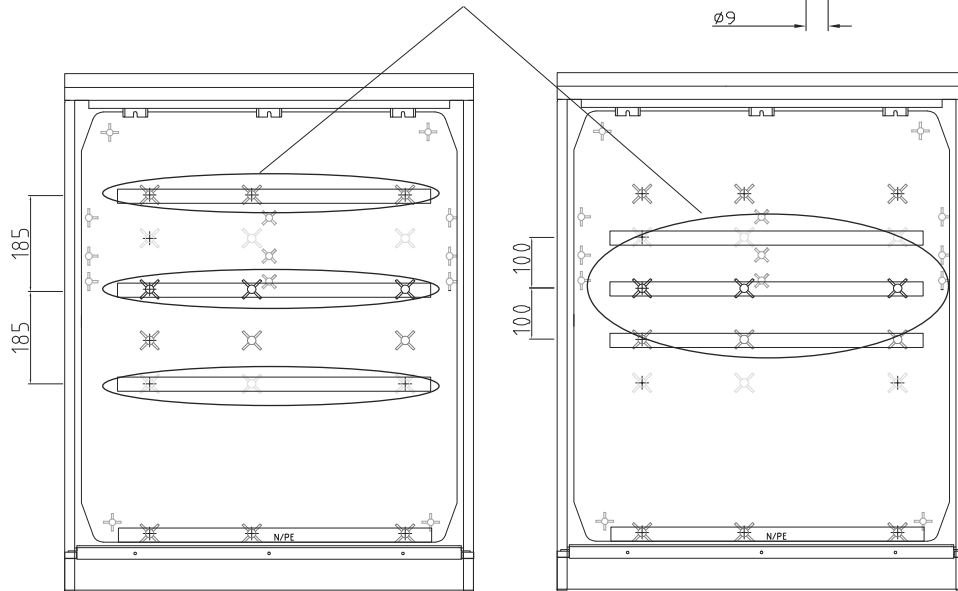
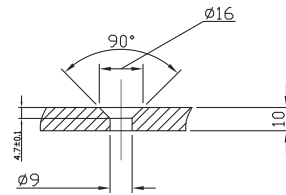
(e2) 1100mm 安装板 Mounting plate



若需安装重物，请先和金米勒技术部联系。  
**If you need to install heavy goods, please contact with us at first.**

3) 尺寸 1 号 850 高 Size1 H=850mm

这 9 个桩头用于固定 3 相铜排，且铜排开孔为沉头孔，  
使用专用螺钉 YB68320  
These 9 domes are used for fixing busbars, and the bus-  
bar holes should be counterbore, using speical screw  
YB68320

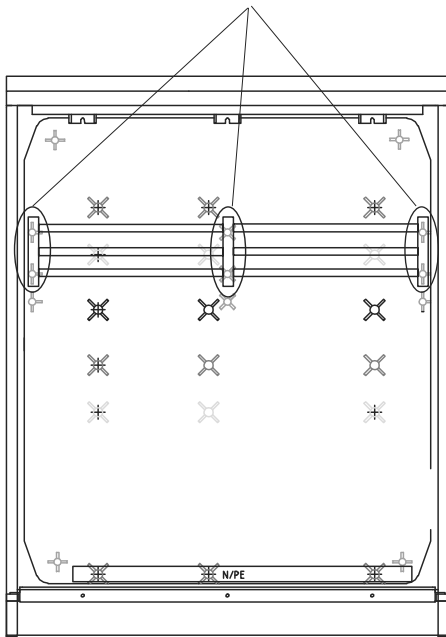


(a) 185mm 母线系统

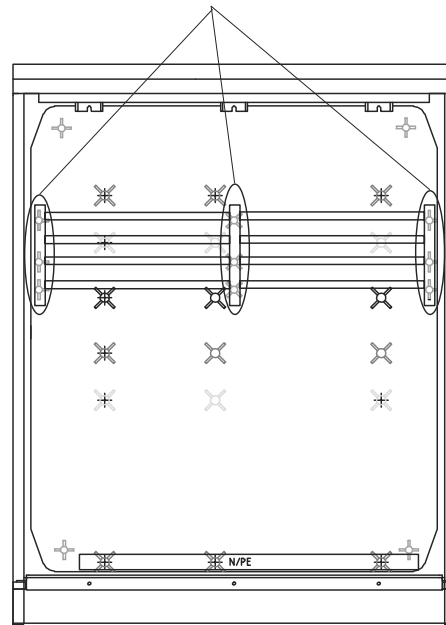
(b) 100mm 母线系统

这 6 个桩头用于固定 3 个 3 极 60mm 母线支架，使用专用螺钉 YB68322  
These 6 domes are used for fixing 60mm 3P busbar support, using speical screw YB68322

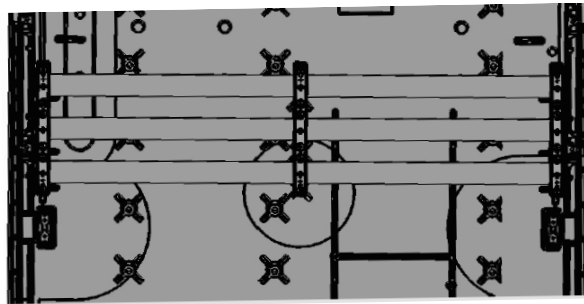
这 9 个桩头用于固定 3 个 4 极 60mm 母线支架，使用专用螺钉 YB68322  
These 9 domes are used for fixing 60mm 4P busbar support, using speical screw YB68322



(c) 60mm/3P 母线系统

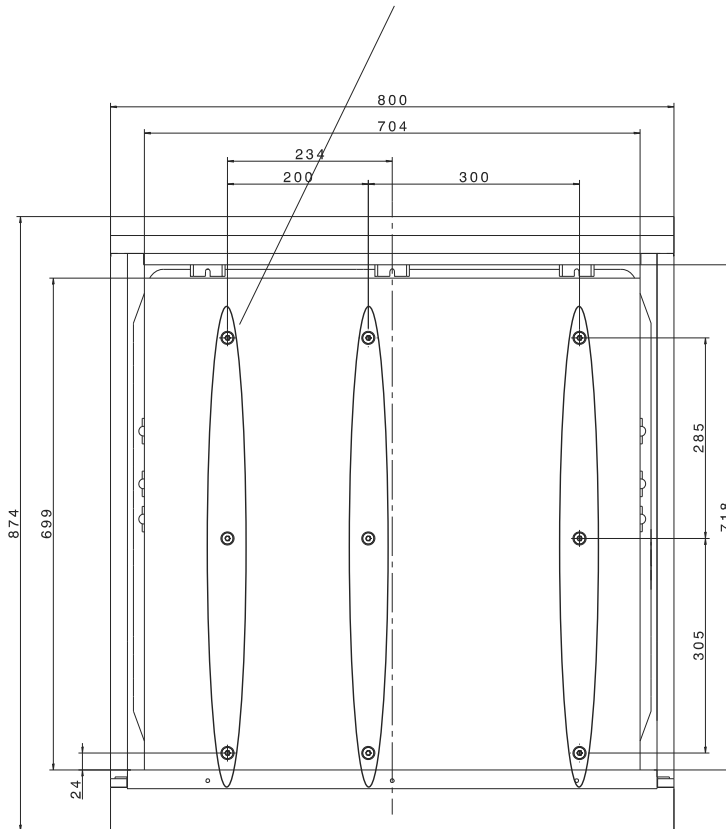


(d) 60mm/4P 母线系统



若需安装重物，请先和金米勒技术部联系。  
**If you need to install heavy goods, please contact with us at first.**

这 9 个桩头用于固定安装板，使用专用螺钉 YB68316  
These 9 domes are used for fixing mounting plate, using special screw YB68316



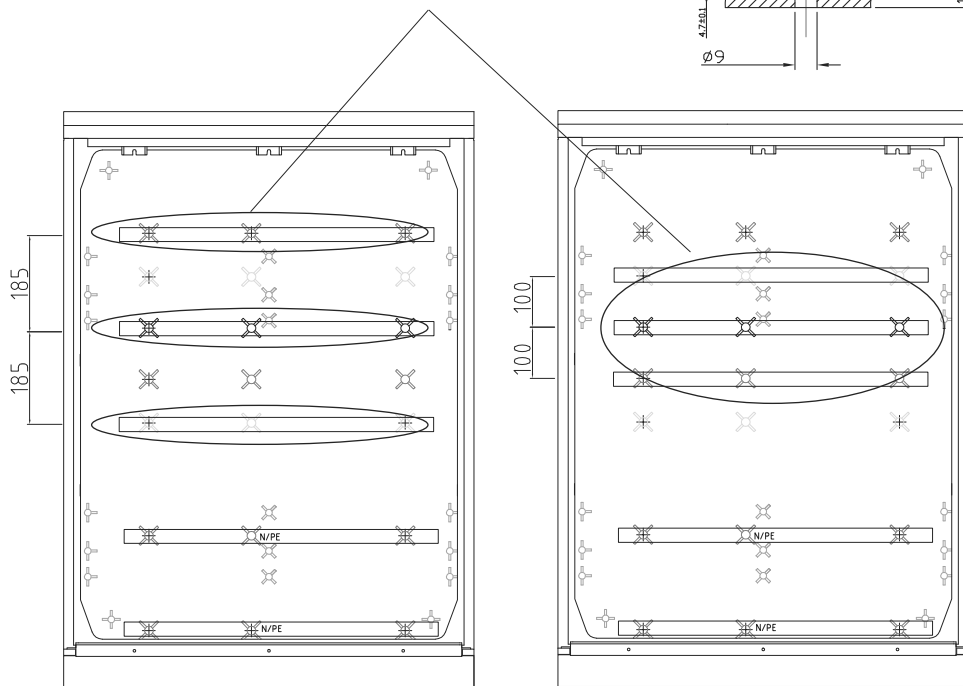
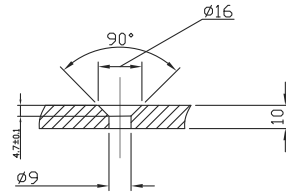
(e) 安装板 Mounting plate



若需安装重物，请先和金米勒技术部联系。  
**If you need to install heavy goods, please contact with us at first.**

## 4) 尺寸 1 号 1100 高 Size1 H=1100mm

这 9 个桩头用于固定 3 相铜排，且铜排开孔为沉头孔，  
使用专用螺钉 YB68320  
These 9 domes are used for fixing busbars, and the bus-  
bar holes should be counterbore, using speical screw  
YB68320



(a) 185mm 母线系统

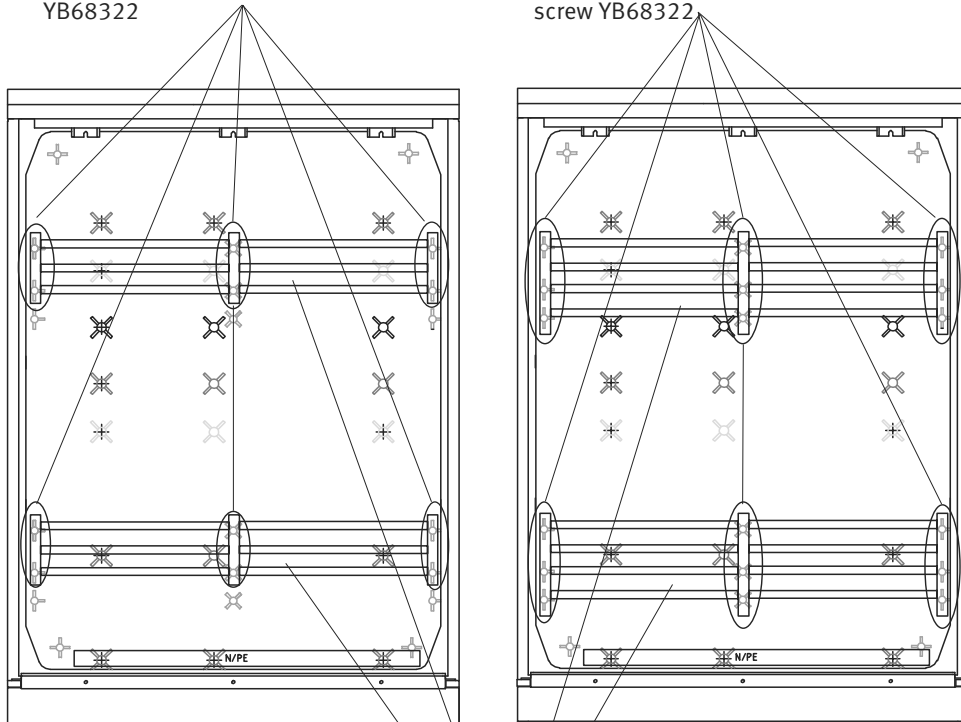
(b) 100mm 母线系统



若需安装重物，请先和金米勒技术部联系。  
**If you need to install heavy goods, please contact with us at first.**

这 12 个桩头用于固定 6 个 3 极 60mm 母线  
支架, 使用专用螺钉 YB68322  
These 12 domes are used for fixing 60mm  
3P busbar support, using speical screw  
YB68322

这 18 个桩头用于固定 6 个 4 极 60mm 母  
线支架, 使用专用螺钉 YB68322  
These 18 domes are used for fixing  
60mm 4P busbar support, using speical  
screw YB68322



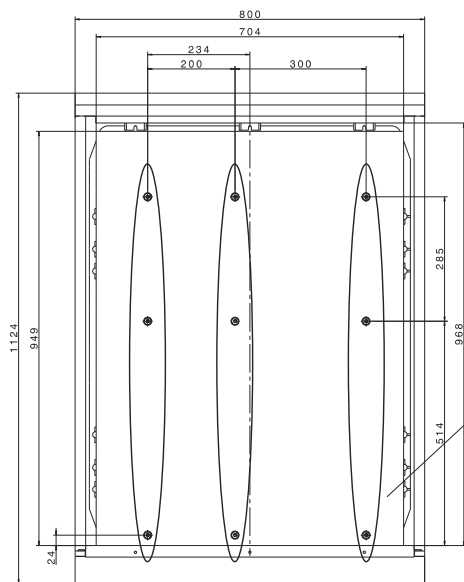
(c) 60mm/3P 母线系统

(d) 60mm/4P 母线系统

此高度箱体可安装两套 60mm 母线系统  
The cabinet include 2 sets 60mm busbar system

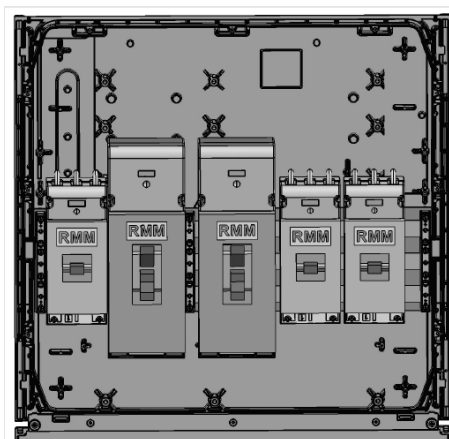
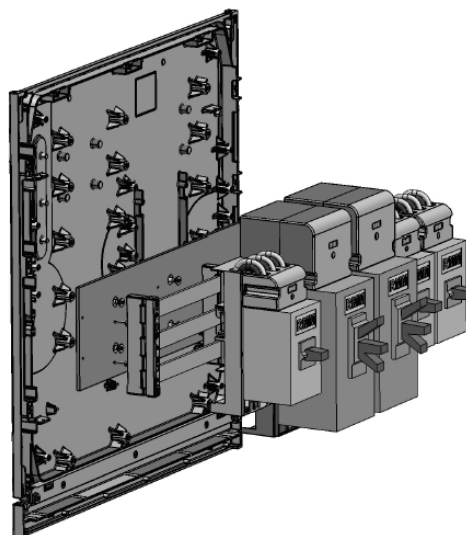


若需安装重物, 请先和金米勒技术部联系。  
**If you need to install heavy goods, please contact with us at first.**



这 9 个桩头用于固定安装板，使用专用螺钉 YB68316  
These 9 domes are used for fixing mounting plate, using speical screw YB68316

(e) 安装板 Mounting plate

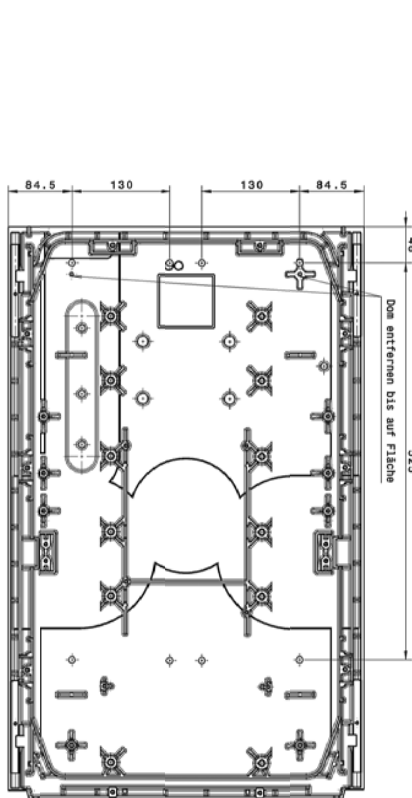


若需安装重物，请先和金米勒技术部联系。  
If you need to install heavy goods, please contact with us at first.

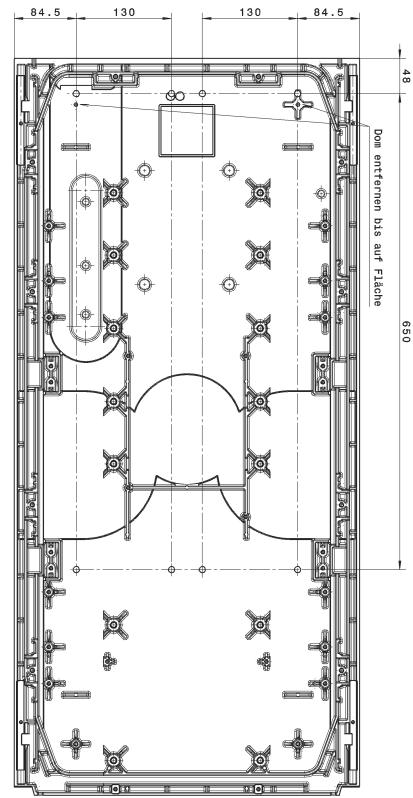


## 附录 2: 挂墙安装 Appendix 2: Wall mounting

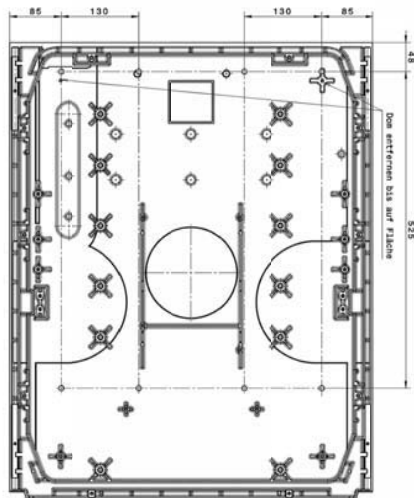
### 1) 背板开孔图 backwall



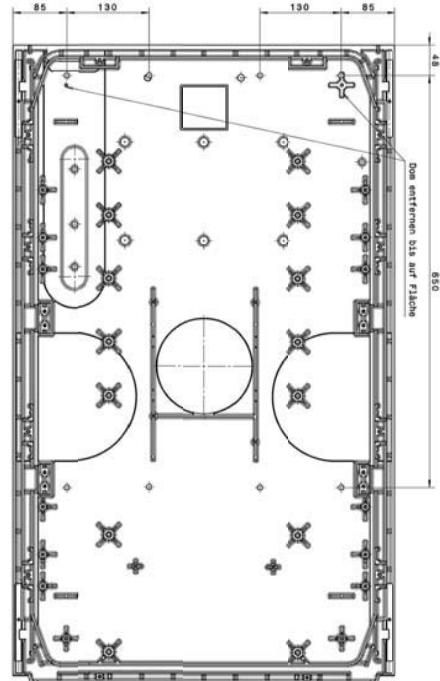
a) S00/850mm



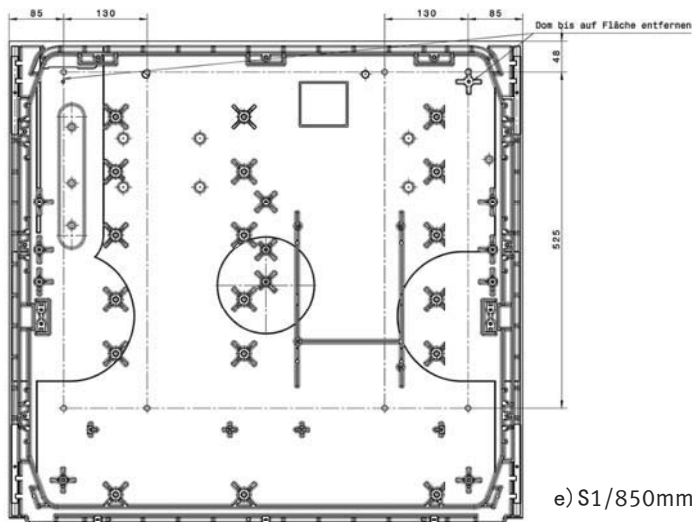
b) S00/1100mm



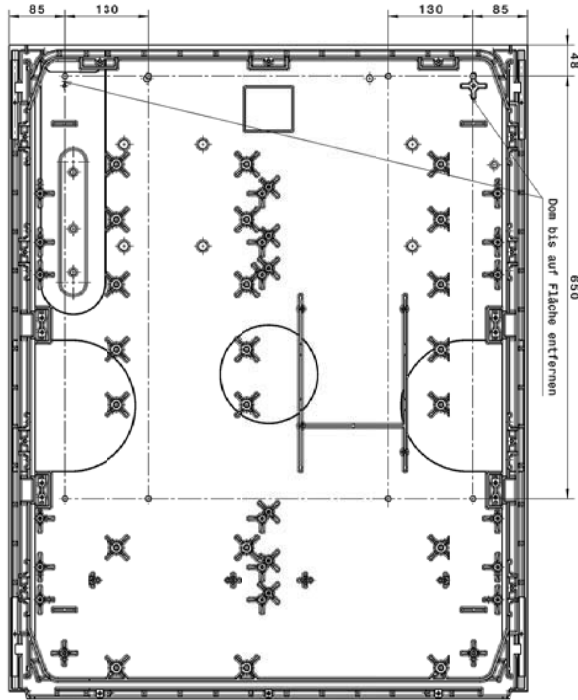
c) S0/850mm



d) S0/1100mm

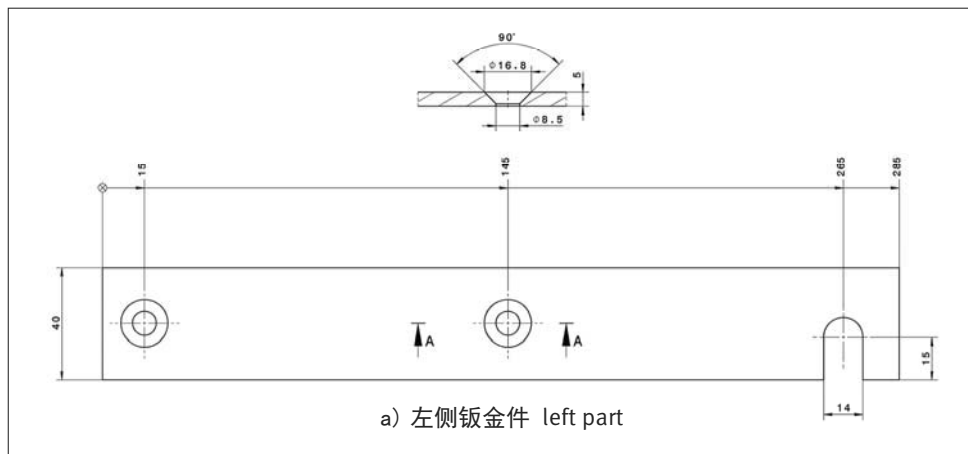


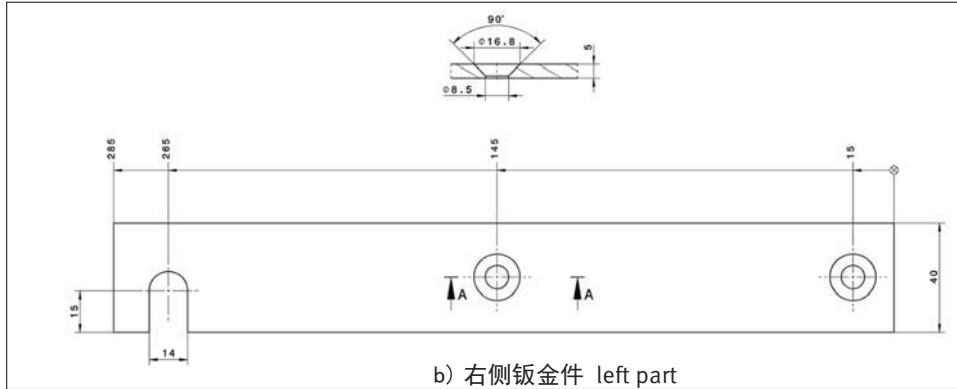
e) S1/850mm



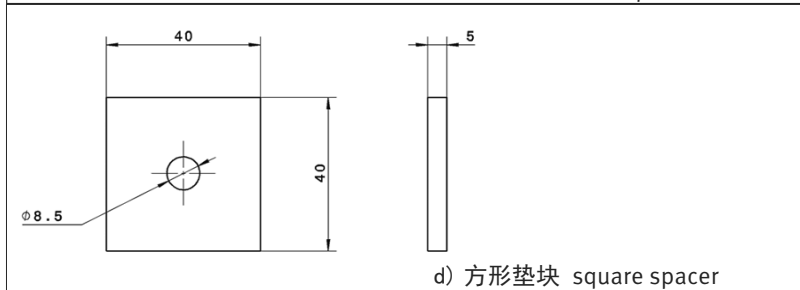
f) S1/1100mm

2) 钣金固定件 metal fixing part

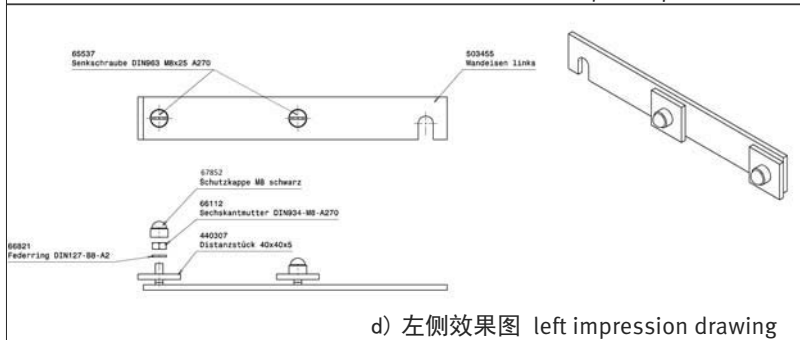




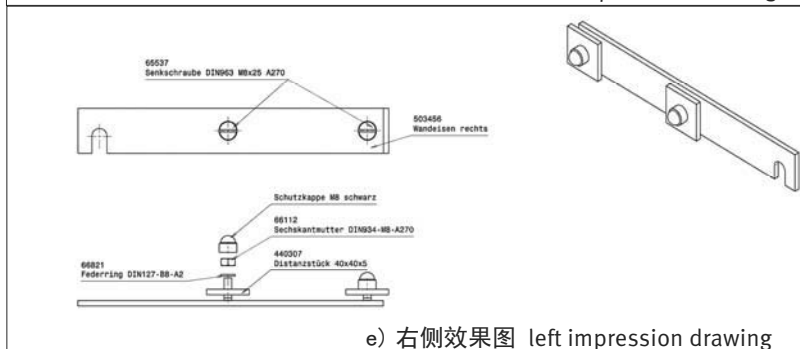
b) 右侧钣金件 left part



d) 方形垫块 square spacer



d) 左侧效果图 left impression drawing



e) 右侧效果图 left impression drawing